



Established Since 1972

## Mobile Refuse Compactor

*Tailor-Made to your needs*



**Body volume ranging from  
10 to 20 cubic meters**

### Safe & Reliable

- \* Compacting unit and refuse body integrated into one structure
- \* Built-in electrically driven hydraulic power & control system

### Practical & Aesthetic Design

- \* Tapered body allows easy discharge of refuse
- \* Bubble-door improves compaction volume

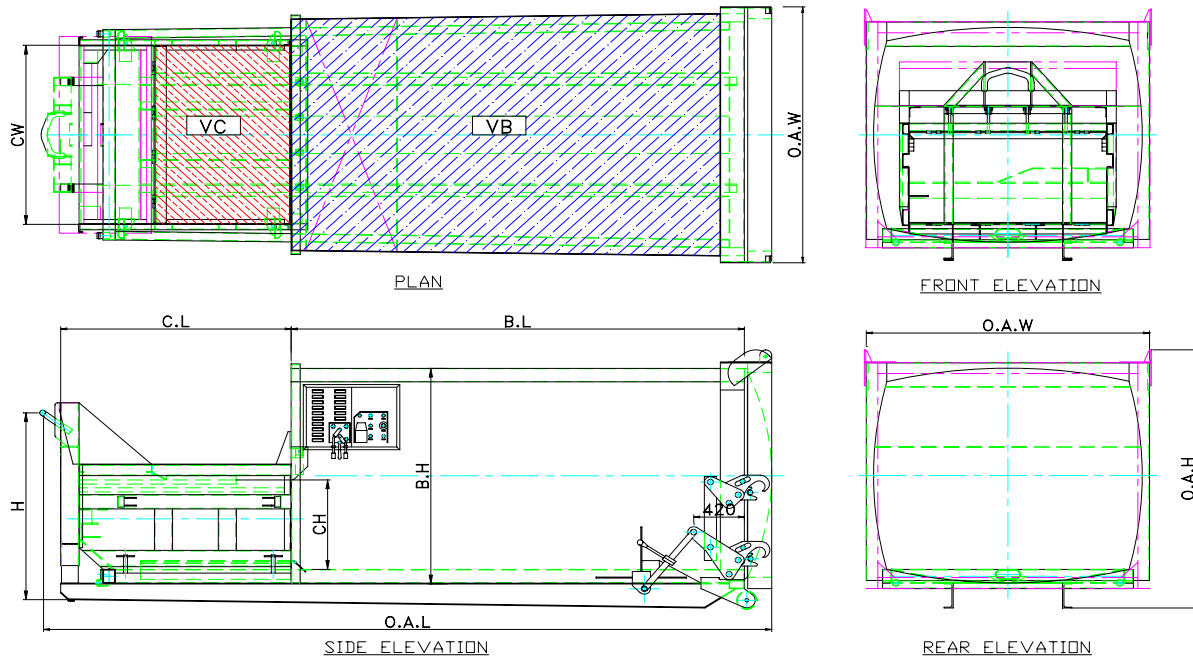
### Versatile customization

- \* Front or side bin lifter
- \* Built to customer's specified length to fit into bin center
- \* Option for hydraulic or mechanical tailgate-lifting

Zenith Engineering Pte Ltd No 34, Joo Koon Circle, Jurong, Singapore 629060  
Tel : (65) 6861 1100 Fax : (65) 6862 1948 Email : info@ze.com.sg Web : www.ze.com.sg

IG ZENITH SDN BHD (480123-H)  
Lot 6975, Batu 12, Jalan Balakong, 43300 Balakong, Selangor, Malaysia  
Tel: (60-3) 8962 1060/61 Fax: (60-3) 8962 1062 Email: igze@po.jaring.my

## Mobile Refuse Compactor (Roll-on Roll-off) Suitable for Commercial and Domestic Waste



Model				MRC100Z	MRC125Z	MRC150Z	MRC175Z	MRC200Z
<b>Dimensions (mm) tolerance +/- 3%</b>								
External	- Overall l length	OAL	5,450	5,750	6,050	6,700	7,350	
	- Overall width	OAW	2,350	2,350	2,350	2,350	2,350	
	- Overall height	OAH	2,380	2,380	2,380	2,380	2,380	
Compaction Chamber	- Internal length	BL	3,160	3,461	3,761	4,411	5,061	
	- Internal height	BH	2,260	2,260	2,260	2,260	2,260	
Filling Opening (internal)	- Length	CL	1,912	1,912	1,912	1,912	1,912	
	- Width	CW	1,600	1,600	1,600	1,600	1,600	
	- height	CH	750	750	750	750	750	
<b>Capacity (tolerance +/- 3%)</b>								
Volume (calculated)	Body (M3)	VB	10.0	12.5	14.0	16.5	19.0	
	Hopper (M3)	VC	1.3	1.3	1.3	1.3	1.3	
Tare Weight	Approx (kg)		3,850	4,000	4,200	4,650	5,100	
Max Payload (compacted density 0.75)	Approx (kg)		6,500	8,000	10,000	12,000	14,000	
Cycle Time	seconds		33	33	33	33	33	
Recommended GVW	Approximated (kg)		18,000	20,000	24,000	26,000	27,000	

### Characteristics

Operation	* Hydraulically Operated Ram
Compaction Force	* 180 KN (achieving a compaction ratio of 1 : 3)
Body	* 4.0 mm Structural Steel fully welded body
Tailgate	* 5.0 mm top hinged leak proof tailgate * Mechanical lock (Optional Hydraulic opening)
Electrical	* Twin Control Panels for both side operation * Build in hydraulic power-pack, 3 phase, 50 Hz, 415V, 7.0KW * Protection - IP X5 per DIN VDE0470-1
Optional Accessories	* Detachable or attached bin lifter suitable for 240 & 660 ltr DIN bins, powered by compactor's power pack. * Binlift Hydraulic levers on both sides of compactor. * Hydraulically operated discharge door.

**Note : Due to the need for continuous improvement, the above specifications are subject to change without prior notice .**