



Established Since 1972

Mobile Refuse Compactor

Tailor-Made to your needs



**Body volume ranging from
10 to 20 cubic meters**

Safe & Reliable

- * Compacting unit and refuse body integrated into one structure
- * Built-in electrically driven hydraulic power & control system

Practical & Aesthetic Design

- * Tapered body allows easy discharge of refuse
- * Bubble-door improves compaction volume

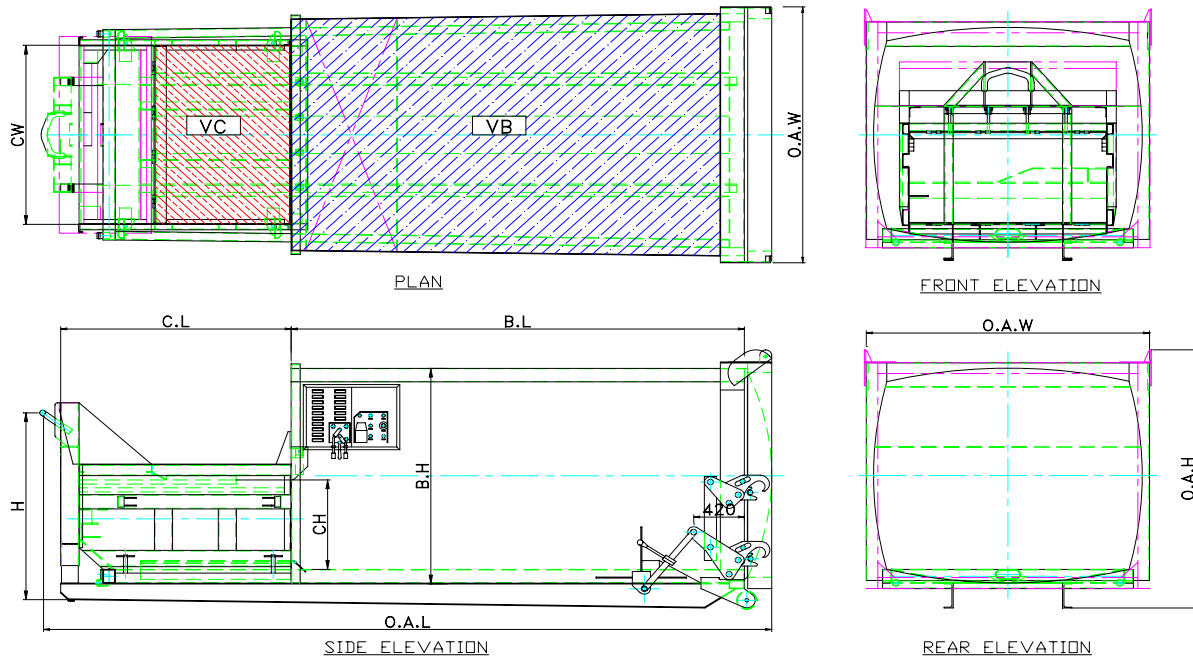
Versatile customization

- * Front or side bin lifter
- * Built to customer's specified length to fit into bin center
- * Option for hydraulic or mechanical tailgate-lifting

Zenith Engineering Pte Ltd No 34, Joo Koon Circle, Jurong, Singapore 629060
Tel : (65) 6861 1100 Fax : (65) 6862 1948 Email : info@ze.com.sg Web : www.ze.com.sg

IG ZENITH SDN BHD (480123-H)
Lot 6975, Batu 12, Jalan Balakong, 43300 Balakong, Selangor, Malaysia
Tel: (60-3) 8962 1060/61 Fax: (60-3) 8962 1062 Email: igze@po.jaring.my

Mobile Refuse Compactor (Roll-on Roll-off) Suitable for Commercial and Domestic Waste



Model				MRC100Z	MRC125Z	MRC150Z	MRC175Z	MRC200Z
Dimensions (mm) tolerance +/- 3%								
External	- Overall l length	OAL	5,450	5,750	6,050	6,700	7,350	
	- Overall width	OAW	2,350	2,350	2,350	2,350	2,350	
	- Overall height	OAH	2,380	2,380	2,380	2,380	2,380	
Compaction Chamber	- Internal length	BL	3,160	3,461	3,761	4,411	5,061	
	- Internal height	BH	2,260	2,260	2,260	2,260	2,260	
Filling Opening (internal)	- Length	CL	1,912	1,912	1,912	1,912	1,912	
	- Width	CW	1,600	1,600	1,600	1,600	1,600	
	- height	CH	750	750	750	750	750	
Capacity (tolerance +/- 3%)								
Volume (calculated)	Body (M3)	VB	10.0	12.5	14.0	16.5	19.0	
	Hopper (M3)	VC	1.3	1.3	1.3	1.3	1.3	
Tare Weight	Approx (kg)		3,850	4,000	4,200	4,650	5,100	
Max Payload (compacted density 0.75)	Approx (kg)		6,500	8,000	10,000	12,000	14,000	
Cycle Time	seconds		33	33	33	33	33	
Recommended GVW	Approximated (kg)		18,000	20,000	24,000	26,000	27,000	

Characteristics

Operation	* Hydraulically Operated Ram
Compaction Force	* 180 KN (achieving a compaction ratio of 1 : 3)
Body	* 4.0 mm Structural Steel fully welded body
Tailgate	* 5.0 mm top hinged leak proof tailgate * Mechanical lock (Optional Hydraulic opening)
Electrical	* Twin Control Panels for both side operation * Build in hydraulic power-pack, 3 phase, 50 Hz, 415V, 7.0KW * Protection - IP X5 per DIN VDE0470-1
Optional Accessories	* Detachable or attached bin lifter suitable for 240 & 660 ltr DIN bins, powered by compactor's power pack. * Binlift Hydraulic levers on both sides of compactor. * Hydraulically operated discharge door.

Note : Due to the need for continuous improvement, the above specifications are subject to change without prior notice .



MOBILE REFUSE COMPACTOR (MRC)
Body Volume ranging from 10 to 20 cubic meters



Zenith Mobile Refuse Compactor is designed for transport and handling by lorries equipped with a hook-lift (roll-on roll-off) equipment. The compacting unit and the refuse body are integrated into one structure. The compactor has its own electrically driven hydraulic power system and an operational control system.



Binlifter , custom made to suit a wide range of bins.



It is equipped with a quick-connect bin-lift on wheels that can be mounted on either side of the hopper. The compactor is designed for operation with wet waste and is designed sloping ~4 deg towards the discharge gate complete with drainage ball-valve at the side.

The compaction unit comprises a rectangular hopper and horizontally operating packer plate, equipped with telescoping follow-plates, preventing refuse emptied into the hopper to fall behind the packer plate. The packer plate slides on 2 guide rails on wear resistant steel and is operated by 2 double-acting cylinders, mounted diagonally behind the packer plate, below the follow-plates.

ZENITH Engineering Pte Ltd No 34, Joo Koon Circle , Jurong , Singapore 629060

Tel : (65) 6861 1100

Fax : (65) 6862 1948

Email : info@ze.com.sg

Website : www.ze.com.sg

IG ZENITH Sdn Bhd (480123-H) Lot 6975, Batu 12, Jalan Balakong, 43300 Balakong, Selangor, Malaysia

Tel: (60-3) 8962 1060/61

Fax: (60-3) 8962 1062



MOBILE REFUSE COMPACTOR (MRC)
Body Volume ranging from
10 to 20 cubic meters

The curved body side-walls offers the required strength without any rib-stiffeners enhancing the aesthetic and at the same time makes washing easier without too many difficult-to-reach corners. Body is tapered towards the compactor, having a bigger cross-section at tailgate-end, to make discharge easier especially so for paper waste.



The body tailgate can be either operated and locked mechanically or (as an option) hydraulically. For hydraulic operated tailgate, the cylinders are located on both sides of the body rear ends and is fitted with hose-burst valves and the hydraulic power is tapped from the hook-lift system (The tailgate cannot be operated from the compactor control panels). The hydraulically operated tailgate opens to 90 deg to facilitate discharge operation.

The tracks under the body conforms to DIN standards and would be compatible with all European hooklifts.



Note that the hydraulic-operated tailgate permits a 90 deg opening allowing efficient refuse discharge whereas the mechanical tailgate opens to the same tilting-angle of the MRC (typically 42 to 45 deg depending on the length of MRC and the hooklift configuration).



For hydraulically operated tailgate, the hydraulic supply is tapped from the hooklift system through the quick-couplings as shown. Option for mechanical tailgate locking.



The tailgate hydraulic system incorporated with a pilot operated check-valve to prevent the tailgate from accidental lowering.



Hydraulically locked tailgate, with a dual-latch linkage offers an almost perfect seal to prevent leakage of slurry water especially during transit.

The tailgate hydraulic system also incorporated a hose-burst valve to prevent tailgate from falling in event of leakage.

Another important safety feature is the flow-restriction valve to ensure lowering of tailgate at pre-set speed.



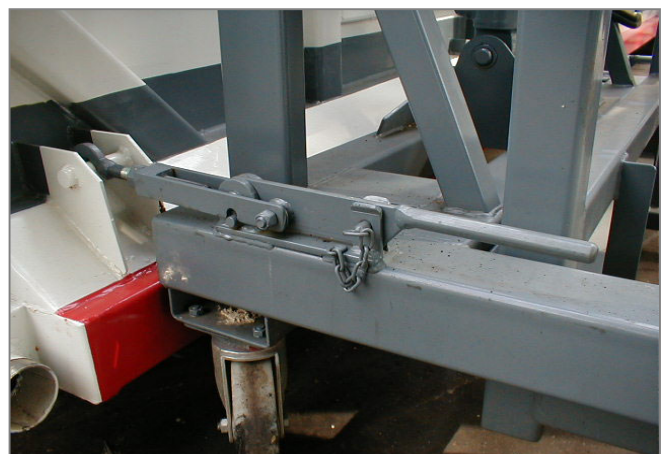
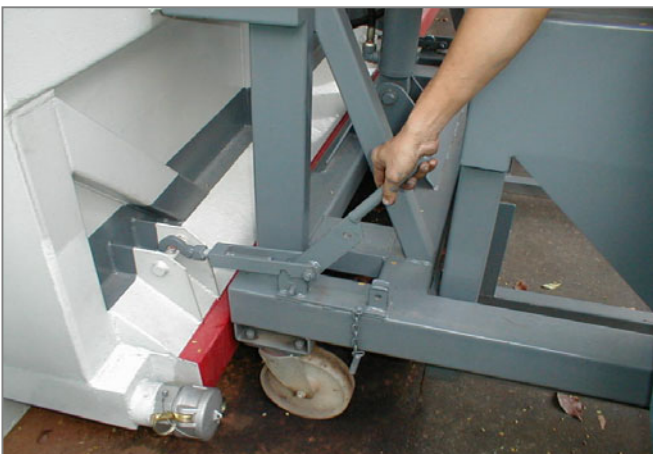


Duplicated control panels on both sides of MRC

The alternate electrical power input comes with the standard safety feature of Auto-power selector whereby only the connected-side would have power supply . There are 2 alternative identical control panels, one on each side of the hopper front. The sequencing of the compaction cycle is controlled by timer to complete approx 3 cycles and finishes in the open position ready for the next load. Depressing the power "on" button starts the motor running, the packer "on" & "off" switch would start & stop the compaction cycle respectively. The Emergency-stop button will freeze the operation instantly.



The electrical and hydraulic systems are located in a recess under 2 cover plates at the front end of the refuse body. This compartment is completely separated from the refuse and easily accessible for maintenance.



The detachable Bin-lifter is mounted on 4 castor-wheels for easy mobility .

The latch design offers simple latch & lock operation that requires no special instructions and is compatible to all Zenith-built MRC irregardless of size (option for integrated front-binlifter is available upon request)

ZENITH Engineering Pte Ltd No 34, Joo Koon Circle , Jurong , Singapore 629060

Tel : (65) 6861 1100

Fax : (65) 6862 1948

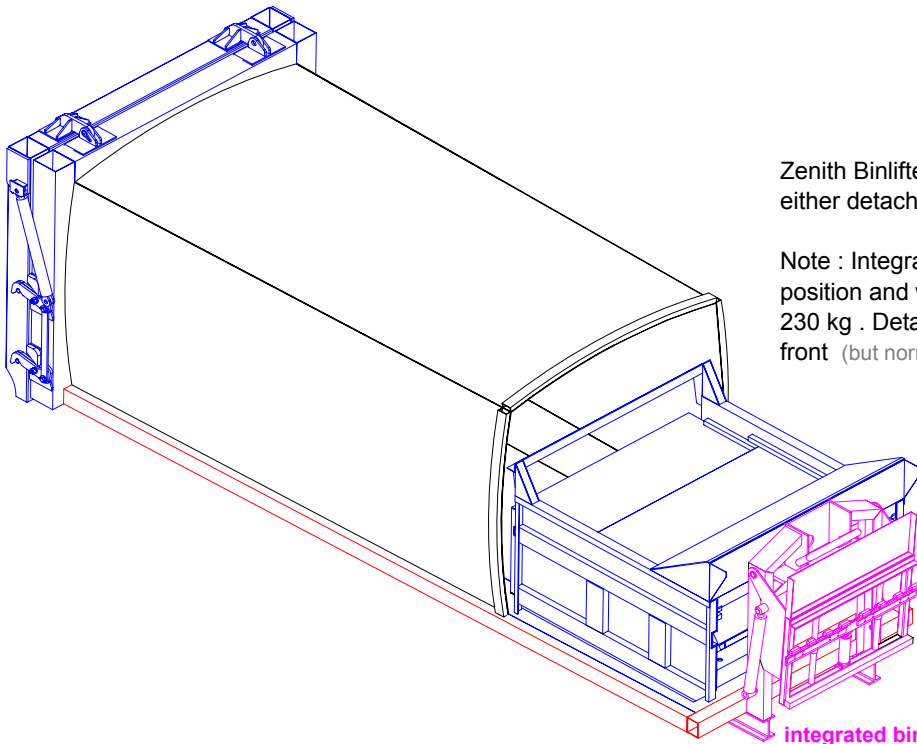
Email : info@ze.com.sg

Website : www.ze.com.sg

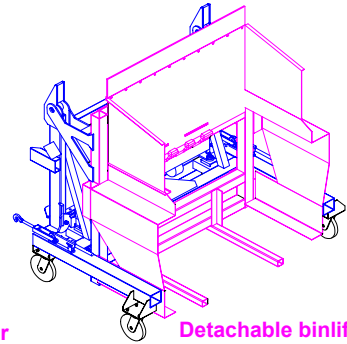


Zenith Binlifter for Mobile Compactors are available either detachable or integrated versions.

Note : Integrated binlifter is available only front mounted position and will reduce the payload by about 200 to 230 kg . Detachable binlifter can be on either side or in front (but normally NOT available in all 3 positions).



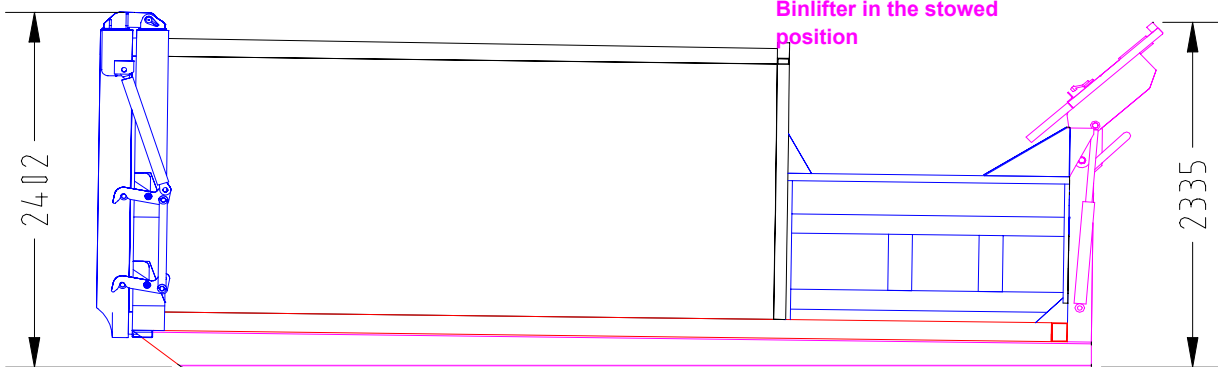
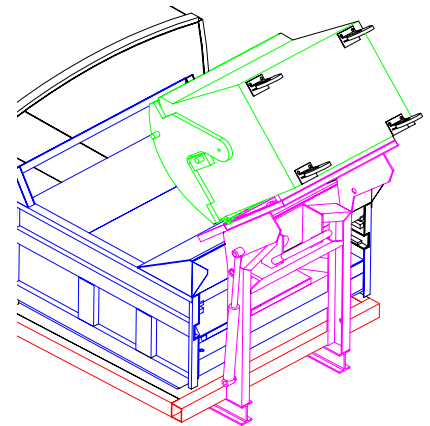
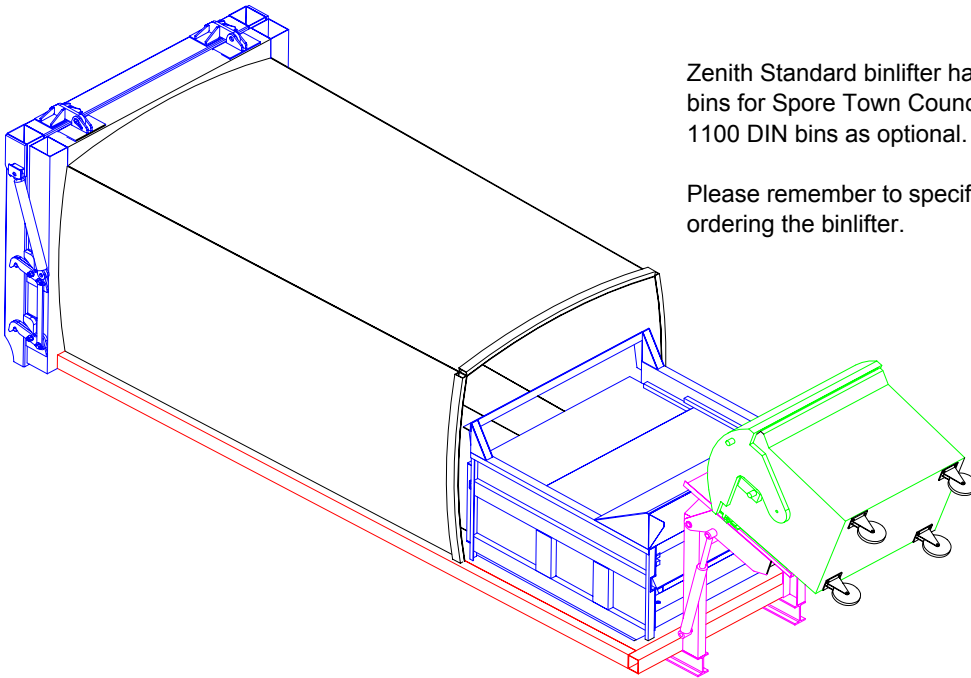
integrated binlifter



Detachable binlifter

Zenith Standard binlifter handles only 660 ltr DIN bins (and HDB bins for Spore Town Councils), but also available for 1000 and 1100 DIN bins as optional.

Please remember to specify the type and size of bins when ordering the binlifter.



Binlifter in the stowed position

All drawings not to scale : dimensions in mm with tolerance of +/- 3%