



Dust-screw (Spiral Waste Bin) *Tailor Made to your needs*



ZENITH Dust-screw (Spiral Waste Bin) is the ideal solution to waste management problems.

Most suitable for high-rise public or private apartments, commercial buildings, market & hawker centers, shopping malls and even river floating debris collection system.

Fully automated to minimize manual labours (it is getting harder everyday trying to employ people to handle refuse and government discourages on using foreign labours).

The unit can be built to sizes ranging from 4.0 to 14.0 cubic meters of body volume in single or double screw configurations, offering a variety of options like fire-controls, bin-lifters, manual-hoppers, auto-wash amongst others.

Well proven to be the equipment of choice by many developers and end-users for its level of hygiene, reliability and ease of use.

ZENITH Engineering Pte Ltd

No 34 Joo Koon Circle Singapore 629060
Tel: (65) 6861 1100 Fax: (65) 6862 1948
Email : info@ze.com.sg Website : www.ze.com.sg

IG ZENITH Sdn Bhd (480123-H)

Lot 6975, Batu 12, Jalan Balakong, 43300 Balakong, Selangor, Malaysia
Tel: (60-3) 8962 1060/61 Fax: (60-3) 8962 1062



Public apartments



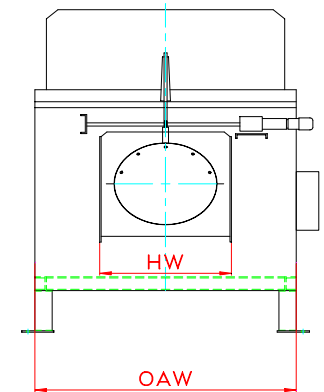
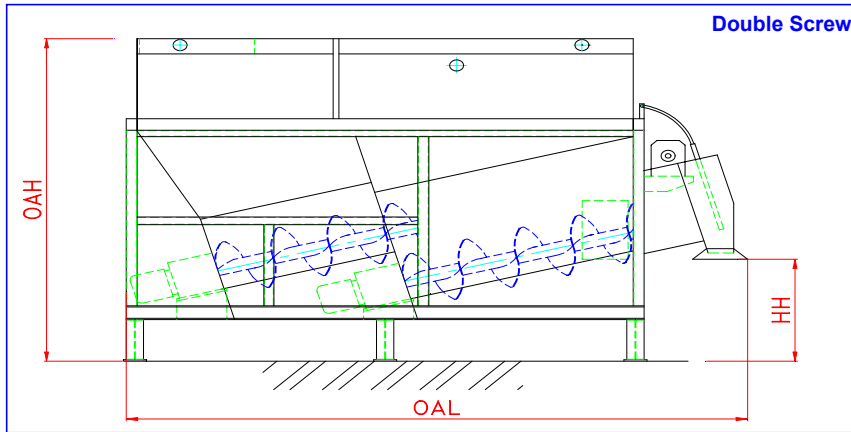
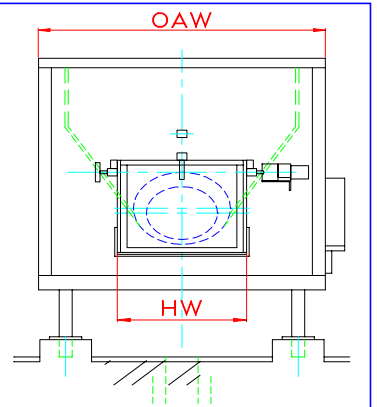
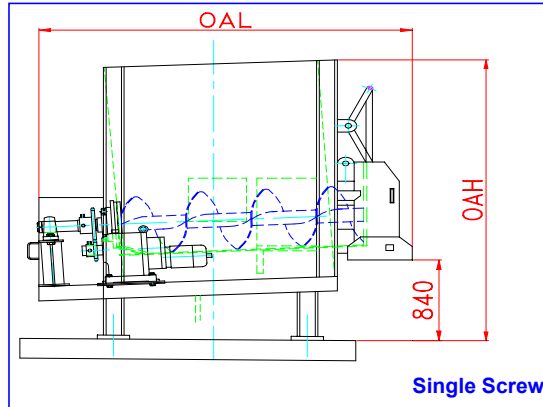
Hospital



Market and Hawker Center



Private Condominium



			SINGLE SCREW					DOUBLE SCREW			
Model			XL-4	XL-5	XL-6	XL-6A	XL-8A	XL-8	XL-10	XL-12	XL-14
Body Volume	M3		4.2	5.0	6.3	6.7	8.9	8.8	10.2	12.6	14.4
Est capacity (density 0.25MT/m3) *	MT		1.1	1.3	1.6	1.7	2.2	2.7	3.1	3.9	4.4
Overall Ext Length	OAL	mm	3,135.0	3,135.0	3,135.0	4,075.0	4,075.0	5,300.0	5,300.0	5,300.0	5,300.0
Overall Ext Width	OAW	mm	2,300.0	2,300.0	2,300.0	2,300.0	2,300.0	2,400.0	2,400.0	2,400.0	2,400.0
Overall Ext Height	OAH	mm	2,714.0	2,914.0	3,424.0	2,668.0	3,068.0	2,618.0	2,768.0	3,068.0	3,293.0
For concrete plinth add:		mm	210.0	210.0	NA	NA	NA	NA	NA	NA	NA
Height from ground (RCV)	HH	mm	1,200.0	1,200.0	1,200.0	1,200.0	1,200.0	1,200.0	1,200.0	1,200.0	1,200.0
Width of discharge hopper	HW	mm	970.0	970.0	970.0	1,022.0	1,022.0	1,022.0	1,022.0	1,022.0	1,022.0
Additional height for Bin-lift		mm	1,235.0	1,235.0	1,235.0	1,235.0	1,235.0	1,235.0	1,235.0	1,235.0	1,235.0
Motor (discharge screw)		kW	4.0	4.0	4.0	5.5	5.5	5.5	5.5	5.5	5.5
Motor (transfer screw)		kW	NA	NA	NA	NA	NA	4.0	4.0	4.0	4.0

Discharge Rate approx 1 m3 per minute

* Double-screw configuration allows approx 10% compaction ratio .

Painting External : 2 coats Epoxy Primer , 1 coat Epoxy finishing
Internal : 2 coats of coal Tar Epoxy up to 200 microns

Control Panel instruments : Status indicator for - Elect supply, screw & gate motors & washing device
: Voltage & current meters

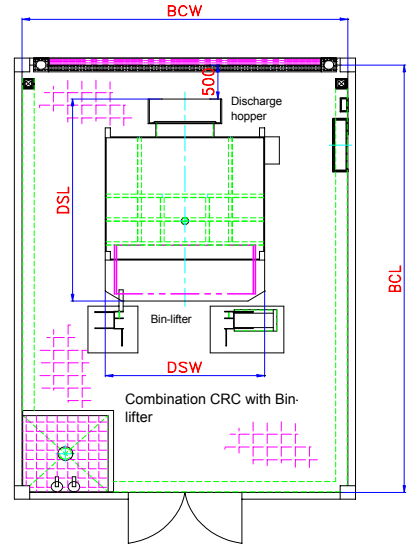
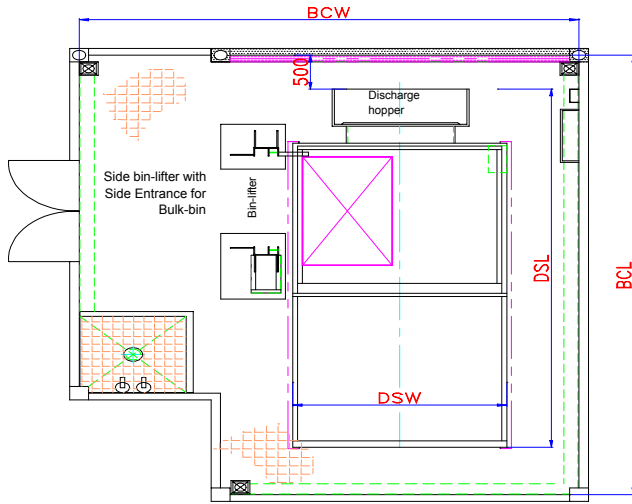
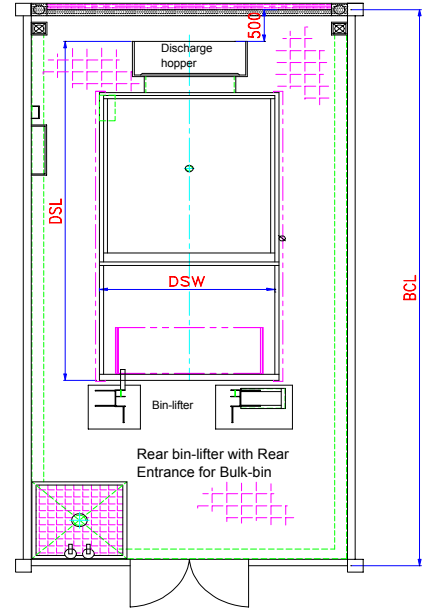
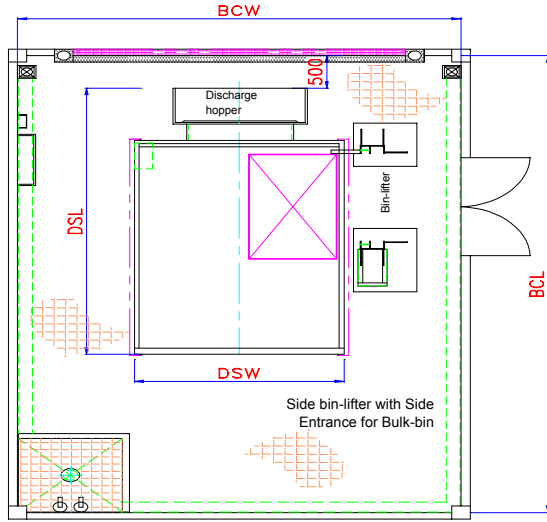
Standard Features : Direct Drainage to Gully-trap : PCB Control-Panel
(Features may differ for retrofitting in old bin centers) : Motor-overload protection : Full-Auto & Manual mode

Optional Features : Internal auto flushing : Auto Fire sprinkler system
: Auto flushing system at discharge hopper : Full-load alert via GSM network
: Mechanical Bin-lifter for 240 to 660 ltr DIN bins : De-odourizer with timer

Note : The above specifications are subject to changes due to the need for continuous improvement without the need of any prior notice from the part of our company .



Typical Examples of Bin-center layout for Dust-screw (Spiral Waste Bin)



		Recommended Bin Center Dimension (mm)															
Zenith Model	Vol m ³	Spec Vol m ³ /100mm	Dust Screw Dimension (mm)			Eqpmt wt Ton	Entrance Height	Centralize Refuse Chute			Binlift at the side			Binlift at the rear			
			DSL	DSW	DSH			BCL	BCW	BCH	BCL	BCW	BCH	BCL	BCW	BCH	
Single Screw	XL-4	4.27	0.374	3135	2300	2714	2.8	4000	4135	3300	3424	4135	4512	4309	5347	3300	4159
	XL-5	5.06		3135	2300	2924	3.1	3800	4135	3300	3634	4135	4512	4519	5347	3300	4219
	XL-6	6.33		3135	2300	3424	3.5	4000	4135	3300	3924	4135	4512	4809	5347	3300	4309
	XL-6A	6.3	0.536	4075	2300	2668	3.8	3800	5075	3300	3168	5075	4512	4053	6287	3300	4053
	XL-7A	7.3		4075	2300	3068	4.0	3900	5075	3300	3368	5075	4512	4253	6287	3300	4253
	XL-8A	8.45		4075	2300	3068	4.2	4000	5075	3300	3568	5075	4512	4453	6287	3300	4453
	XL-10A	10.6		4075	2300	3468	4.5	4200	5075	3300	3968	5075	4512	4853	6287	3300	4853
XL-12A	12.73	4075	2300	3868	4.8	4200	5075	3300	4368	5075	4512	5253	6287	3300	5253		
Double Screw	XL-8	8.76	0.800	5300	2300	2593	7.0	3800	6300	3300	3093	6300	4512	3978	7512	3300	3978
	XL-10	10.16		5300	2300	2768	7.2	4000	6300	3300	3268	6300	4512	4153	7512	3300	4153
	XL-12	12.56		5300	2300	3068	7.5	4000	6300	3300	3568	6300	4512	4453	7512	3300	4453
	XL-14	14.36		5300	2300	3293	7.8	4000	6300	3300	3793	6300	4512	4678	7512	3300	4678
	XL-16	16.16		5300	2300	3518	8.1	4200	6300	3300	4018	6300	4512	4903	7512	3300	4903

Note :
 Dust Screw Weight is based on calculation with a tolerance of +/- 5%, additional 1.5 to 2.0 MT if a mechanical bin-lifter is required.
 Specific Volume is the increase of volume for every increase of 100mm in ceiling height of the Bin-center.