



Lifts 120 to 660 ltr DIN bins

Safe , simple and easy to use .

Fully automatic push-button controls .

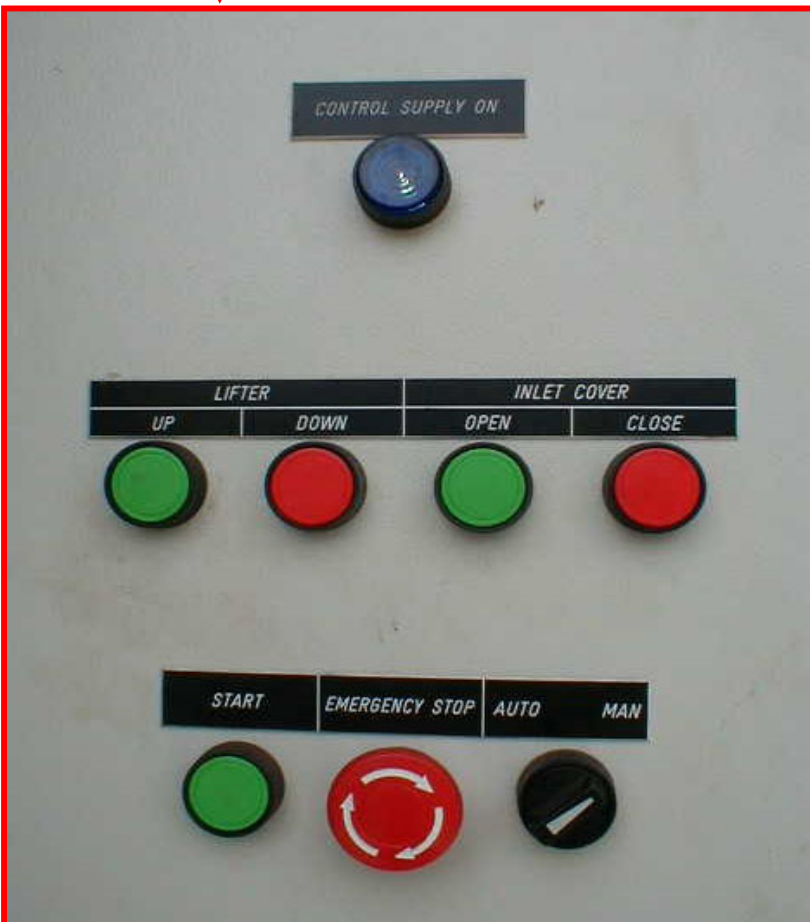
Reliable , durable , trouble-free



Chain & Sprocket design for reliability & minimal maintenance



Timer controlled to complete 1 cycle , typically between 45 secs to 90 secs .



Binlifter Operation Panel

Simple & easy to operate
Fully-Auto or Manual mode

Automatic mode allows the whole binlifting cycle to be completed with 1 press of the start button .

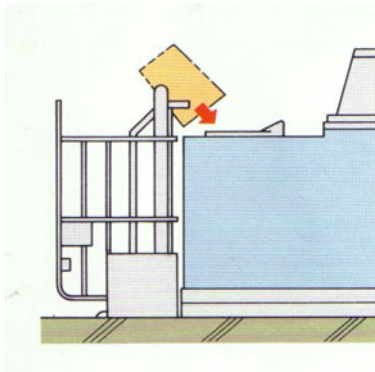
Emergency Stop button cuts off all electrical supplies and immobilise the whole system.

Manual mode is used during maintenance & servicing allowing service personnel to manipulate the binlifter with ease .

Bin Lifter System

Suitable for Bin-centers without Refuse Chute system. Most suitable for commercial or office buildings, food & market center and bin-centers for residential apartments .

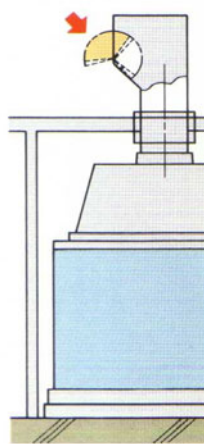
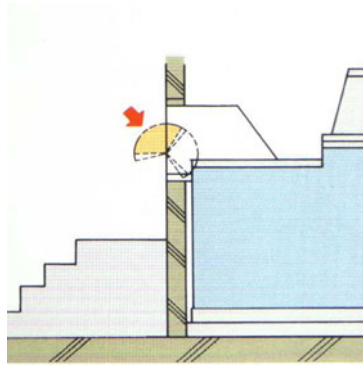
Bin-lifts are mostly built to handle DIN standard bins from 240 ltr to 660 ltrs, binlift can be located on either side or at the rear.



Fixed Volume hopper

Most suitable for high rise residential apartments , either with common refuse chute or a stand alone bin-center. The fixed-volume hopper ensures no bulky waste is discharge into the dustscrew .

The hopper can be operated by hand, push-buttons or foot-pedal.



Direct Discharge method

Suitable for commercial complexes whereby the users are limited to the appointed cleaners to ensure safe and proper disposal of refuse .

