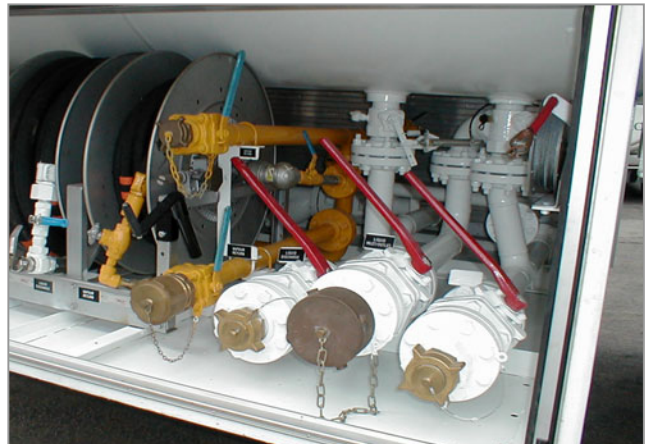




Above photo shows a 18,000 Ltr (16,000 kg payload) based on 90% filled and SG 0.56 delivered to Exxon Singapore in Nov 2001. 18.0 mm Tank shell , 19.0mm dish-ends corrosion allowance of 1.0mm.



kerb-side



Option for manual, electrical or hydraucal operated hose reel. Only reputable & reliable components like Fisher controls, Rego or Kitz valves, Neptune meters, Blackmer pump, Alfons Haar reels, or their equivalents are used (refer to component list attached in specifications for details) .



driver side

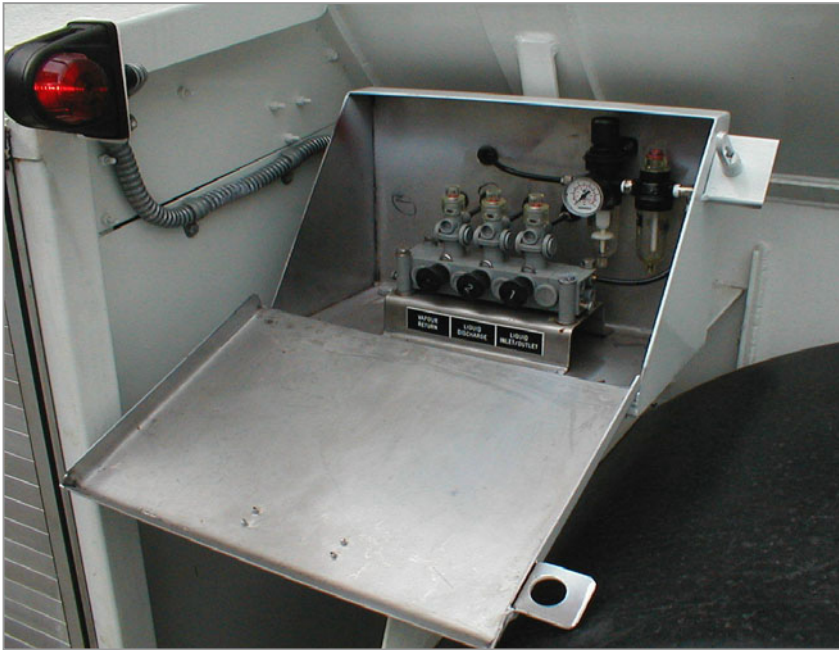
Colour coded piping system , **Yellow** for vapour line and **White** for liquid line.



Option for pneumatic or hydraulic actuated valves. Hydraulic is chosen normally for its easy identification of leaks (both air or oil are operating at the same pressure of about 4~5 bar) .



LPG Tankers Compliance to all Oil Majors specifications



Full Pneumatic control and Emergency shut-off switch.



Rego or Fisher Roto-gauge



High quality cabinet with spring-loaded positive-lock (ie door will not dis-lodge during rough roads) aluminium Roller-shutter door, pneumatically interlocked to the vehicle brake system.