



We will give your truck wings ...



Saves Time

The side wings fold up ready for loading or unloading within 10 seconds

Fast & simple

Electric controls, hydraulic opening, automatic locking

Miracle of space

The best utilization of space in the new HGV generation. The folding sides ensure that there is no loss of loading volume.

Theft-proof

Automatically locking sides prevent pilferage

All-round space

Sides lie flat against roof when fully opened



Optimum assembly height

No parts fold down, no problems with pavements, extremely low loading sill

Tight sealing

The hermetic sealing prevents dust & moisture from penetrating.

Constant advertising space

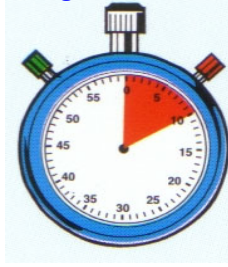
Advertising signs remain visible even in a partly-opened state

Flexible loading safety

All normal loading safety systems can be employed.



Wings are folded within an amazing 10 seconds



2 secs.

A Concept opens up: the Wingliner

The Wingliner sets new standards in innovative engineering for loading / unloading utility vehicles.

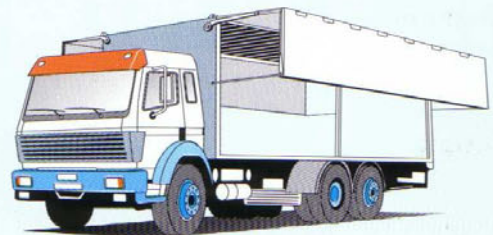
The hydraulic folding wings swing out easily at the press of a button, requiring an average of 10 seconds !

Top manufacturing quality ensures that the inner space is perfectly locked and sealed. No dust or moisture can harm the cargo. And the low loading sill means that the inner space is utilised to the full.

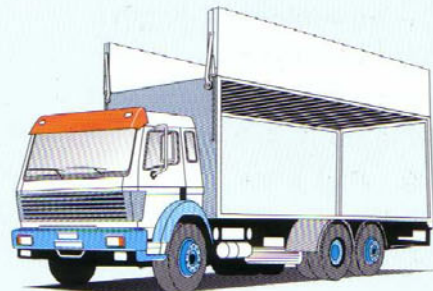
The Wingliner system is rounded off by comfortable handling. Cumbersome locking of flaps "by hand" is no longer necessary .



4 secs.



6 secs.



8 secs.



10 secs.

The principle

The Wingliner is an innovative design aimed at reducing the operating cost of utility vehicles. A closed-circuit hydraulic system allows the side walls to be moved into any position. The cargo can be accessed within seconds. The swing arms are guided by sliding jaws and are connected to the swing motor and the torsion shaft via clamping elements. These position the Wingliner at each point of its opening curve. Two gas tension springs on each side ensure the necessary stability of the side walls in all positions.

Zenith Engineering Pte Ltd

No 34, Joo Koon Circle , Jurong , Singapore 629060

Tel : (65) 6861 1100

Fax : (65) 6862 1948

Email : info@ze.com.sg

Website : www.ze.com.sg