

ZENITH

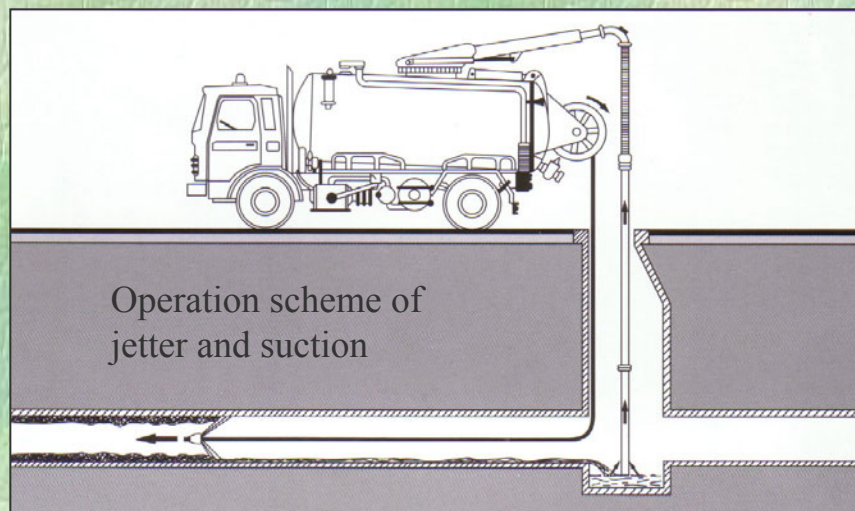
Vacuum Tanker
Tailor-Made to your needs



Tank Capacity :

Water compartment : 500 to 5,000 ltrs

Sludge compartment : 3,000 to 12,000 ltrs

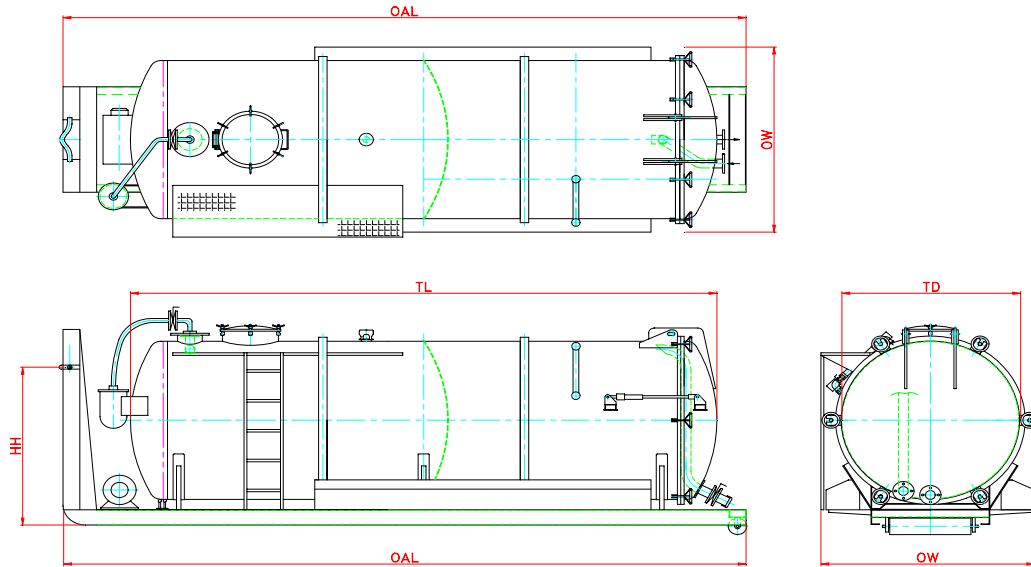


Zenith Engineering Pte Ltd No 34, Joo Koon Circle , Jurong , Singapore 629060
Tel : (65) 6861 1100 Fax : (65) 6862 1948 info@ze.com.sg

IG Zenith Sdh Bhd (480123-H) Lot 6975, Batu 12, Jalan Balakong, 43300 Balakong, Selangor, Malaysia
Tel: (60-3) 8962 1060/61 Fax: (60-3) 8962 1062



SKID-MOUNT VACUUM TANKER (GULLY EMPTIER) General Specification



Model		VCT-80S	VCT-110S	VCT-130S	VCT-150S
Capacity (Tank Volume)	Ltr	8,000	11,000	13,000	15,000
Estimated Tank Tare weight	kg	3,500	3,900	4,200	4,400
Recommended min GVW	kg	17,000	20,000	24,000	26,000
Recommended Wheel Base	WB mm	4,250	4,300	4,500	4,700
Overall Length (approx)	OAL mm	6,100	6,100	6,300	6,800
Overall width (approx)	OW mm	2,250	2,250	2,300	2,300
Tank length (approx)	TL mm	4,550	5,100	5,300	5,800
Tank Diameter (approx)	TD mm	1,560	1,670	1,860	1,900
Hook Height	HH mm	1,580	1,580	1,580	1,580
No. of compartments		single	single	single	single
Shell Thickness	mm	6.0	6.0	6.0	6.0
Dishhead Thickness	mm	6.0	6.0	6.0	6.0
PUMP (Hydraulically driven c/w air-oil cooler)					
Model		PNR 142	PNR 142	PR 150	PR 150
Free Air Flow	m3/min	10.0	10.0	15.0	15.0
Cooling method		Air injectn	Air injectn	Water	Water
Maximum vacuum	%	92.0	92.0	95.0	95.0
Noise level (60% vacuum at 7m)	dB	78.0	78.0	75.0	75.0
Pump weight	kg	175.0	175.0	350.0	350.0

Tolerance for above dimensions & specifications : +/- 3 %

TANK

Design Code	: ASME Section VIII Division I
Working Pressure	: 2.0 bar
Tank type	: Cylindrical section , torispherical ends
Material	: BS 4360 Grade or ABS Grade A ship plate or SS400 Carbon steel
Internal Coating	: Coal tar epoxy resin or equivalent
Feature	: Longitudinal welding performed at top of tank only
Skid Frame	
Pump	: Rotary sliding vane, hydraulically driven c/w manual 4 way valve
Standard Features	: Single 16" manhole , primary and secondary shut-off valve : Sludge trap tank for overflowed liquid : Pressure line filter, change over valve , discharge silencer
	: Vacuum & pressure safety relief valve : Hose compartment c/w 2 X 3m hoses
	: Access ladder & Sight glass at rear door
Optional Features	: Air - Oil Cooler : Cyclonic secondary shut-off

Note : Due to the need for continuous improvement, above specifications are subject to change without prior notice



SKID-MOUNT VACUUM TANKER (GULLY EMPTIER) Typical layout of Skid Mounted Vacuum Tank

Mild Steel 'A' frame tow-bar suitable for arm-roll (hooklift) .

Vacuum pump & hydraulic controls located on kerb-side .



Hose compartment on both sides .
Access ladder on kerb-side .

Secondary shut off on driver side



ZP2450/95 10,000 ltr VCT

Bottom rollers & skid-frame suitable for most arm-roll hooklifts .

Zenith Engineering Pte Ltd No 34, Joo Koon Circle , Jurong , Singapore 629060
Tel : (65) 6861 1100 Fax : (65) 6862 1948
Email : info@ze.com.sg Website : www.ze.com.sg